

Appendix D – Data Field Color Meanings

The background colors of various data fields or labels have meanings. Here is a list of some of them:

Yellow background data description label:

- a) With a white 3-D data field box (ex "Load/Commodity" data field in Figure D-1):
 - Dropdown list for data with limited values (ex: the "Make this shipment" data field in Figure D-1).
 - Text for data with any value
- b) With a flat (non 3-D) data field with a pale green background(ex: "Average grade between stations" data filed in Figure D-2):
 - Data that interacts with other data.
 - Calculated data that can be adjusted to fine tune the operation, but which in most cases should be left alone.
- c) Display with the associated data field having a darker green background:
 - Data related to a data field on the same line (ex "STCC" data field in Figure D-1).

Light Purple data description label:

- a) Previous data when comparing to new data.
 - b) Data description explanation label.
- (Note that the light purple background labels are mostly used in DCC and weighscale sections).

Middle Green (ex: "Charges \$" data field in Figure D-1):

- a) An instruction. (ex: The text with the Middle Green background above the two radio buttons in Figure D-3).
- b) Data calculated/managed by ProTrak and based at least in part on a "flat" data field box with a white background. The Middle Green data should be left alone, but can be fine-tuned by altering the entry in the associated white data field. Resulting data forms an instruction, or is related to an instruction.

Middle Blue background (ex: Last line in right hand column of Figure D-1):

- a) "Test" data.
- b) Notice that the data needs to be changed.
- c) Option to select which "list of data" to display in the right-hand panel.

Red: Serious error or problem (with two exceptions):

- a) Missing siding numbers.
- b) Hotbox display.
- c) Exceptions:
 - 1. "STOP" button on DCC throttles.
 - 2. Label for "Railway Clearances" as the cover of the book is actually red.

Bright Yellow: operational issues warning

- a) Cutlist is pending for car routed into this train.
- b) No trains being held at yard.

Pink: Waybill information in the "Changing active car..." window.

A colored background (pink) indicates the car has a waybill assigned but is on its way to the shipper. The car is "Empty for load" (tt).

Sample Windows

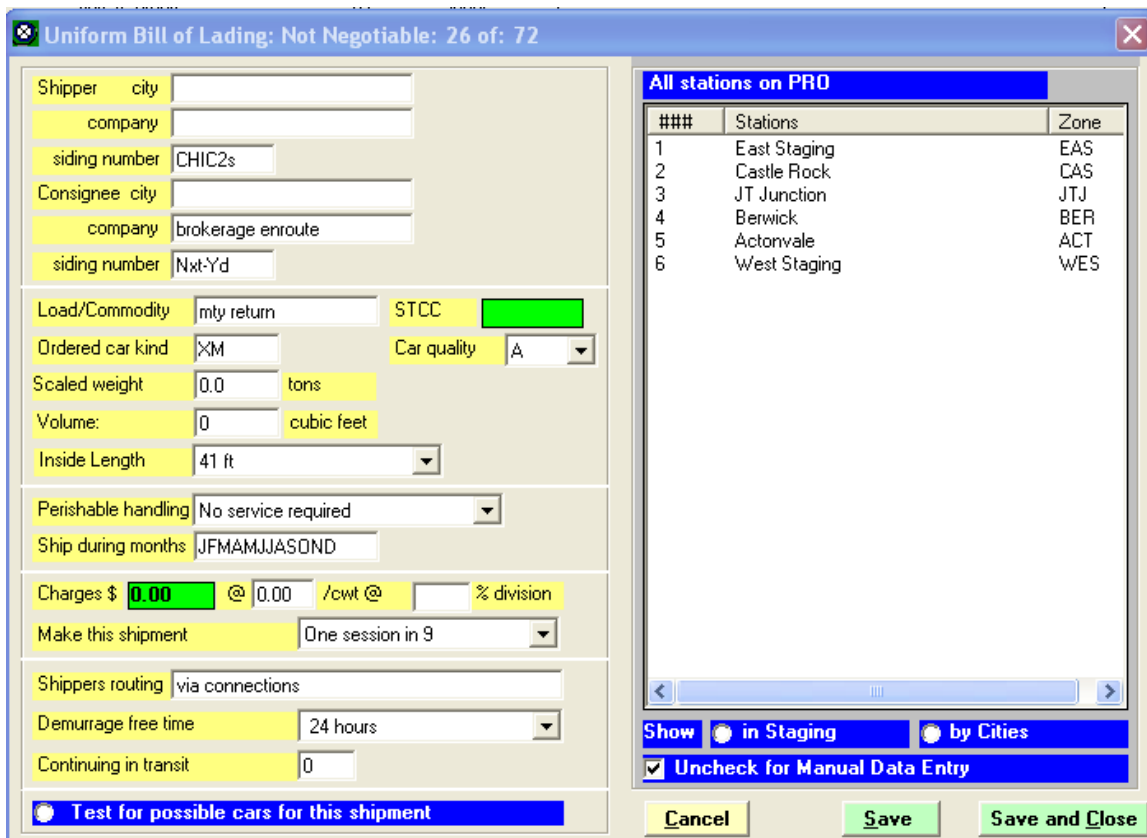


Figure D-1

Changing station: 1 of: 6

The named point: East Staging
 The zone code is: EAS
 Subdivision: Middle

For main track from East end
 Clearance meets AAR Plate: C
 Zone speed limit is: 20 mph
 Distance between clearance points: 0 inches
 Average grade between stations: 0.00 %
 Elevation (west end of interval): 40.0 inches

At the station ...
 Distance between clearance points is: 60 inches
 The average grade on these tracks is: 0.00 %
 Elevation (west end of station): 40.0 inches
 There is a second, steeper, main track: No

Tracks under DS control: Staging

###	
0	No online data
0	
0	
0	
0	
0	
0	
0	
0	
0	
0	
0	

Uncheck for Manual Data Entry

Cancel OK

Figure D-2

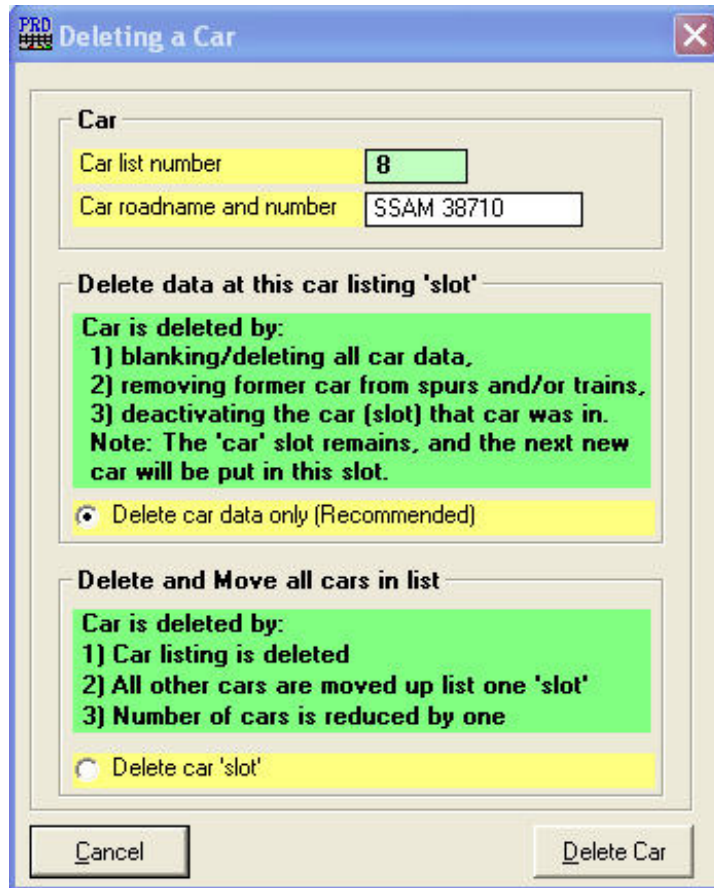


Figure D-3