

## Chapter 1 – Setting Up the Railroad

### Tombstone Data

The first thing that needs to be done is to set up the 'tombstone data' – the information that never, or at least very infrequently, needs changing.

Once ProTrak has loaded, you need to make sure that you have the sample railroad <sup>(1)</sup> that was supplied with ProTrak is set as your home railroad so that you can follow the instructions in this manual. This will also ensure, as much as possible, that the screen shots shown in this manual match those on your PC. You can determine if the sample railroad is your home railroad by examining the window title bar. If it reads "North South: Vol 1998/Northeast" you can skip to step 4.

1. If you need to change home railroads, on the ProTrak toolbar, click on "File" then choose "Change home railroad". Figure 1-1 shows the window that will be displayed. (Note that there may be other railroads shown if you have done any creation work).

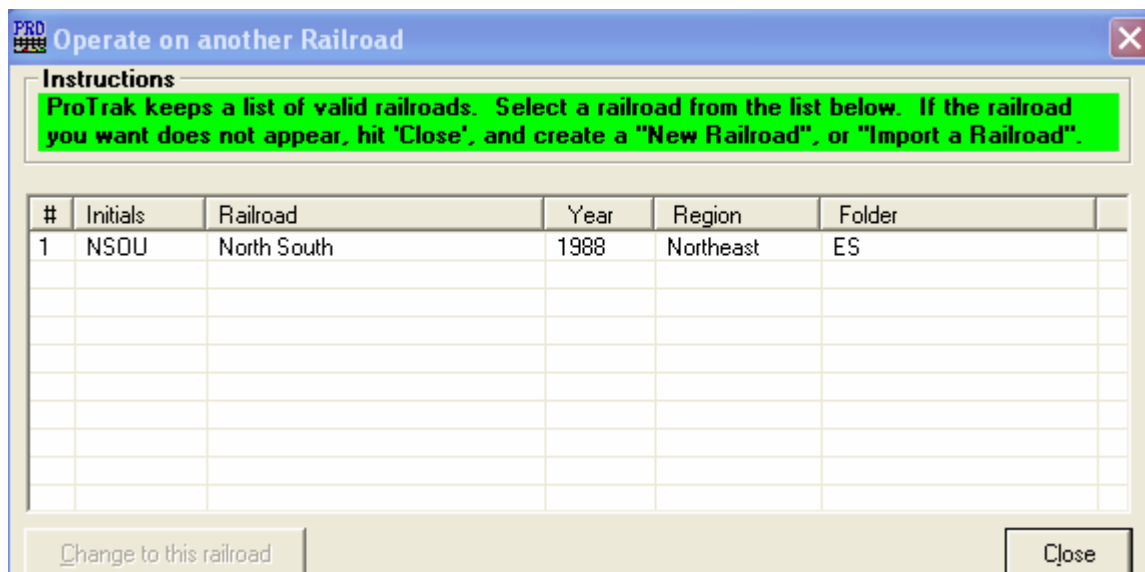


Figure 1-1

<sup>1</sup> It is important that you do not edit the data in the sample railroad as this data is used to establish any new railroads that you may set up. In addition, if for some reason there is a need to re-install ProTrak, the data for the sample railroad will be overwritten. For your information, the data for the sample railroad is stored in the "ES" directory in ProTrak.

- Click on "NSOU" then click on "Change to this railroad". You should now see the message displayed in Figure 1-2.

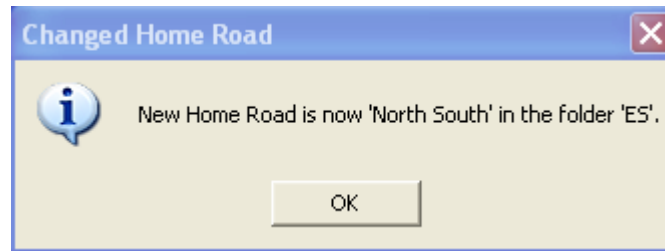


Figure 1-2

- Click on "OK" to continue. We're now ready to create a new railroad.
- On the ProTrak toolbar, click on "File" then choose "New Home Railroad" from the dropdown list. This will bring up the window shown in Figure 1-3.

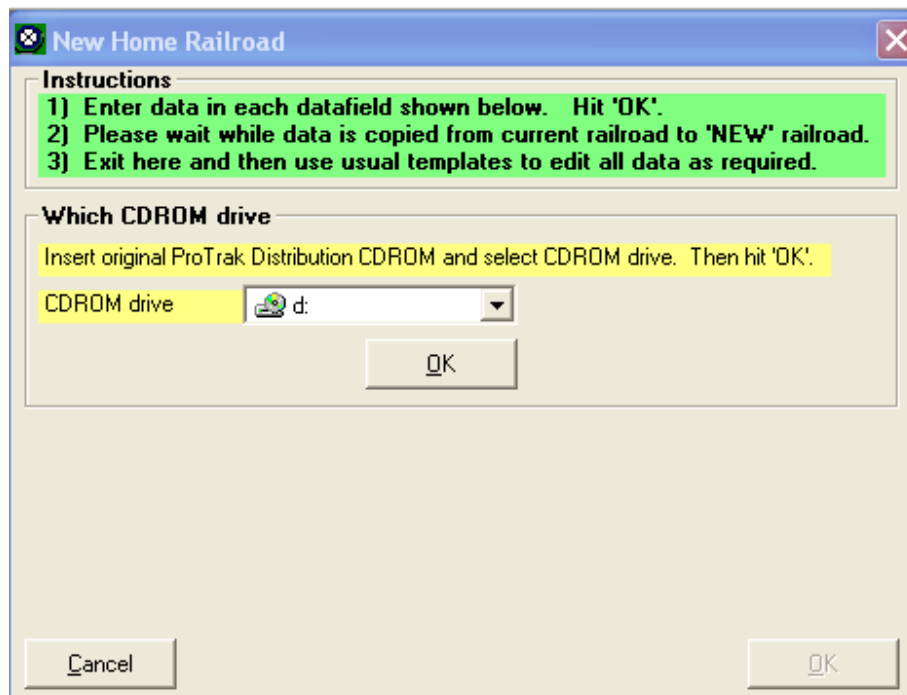


Figure 1-3

- The program will search for a moment or two trying to find your CD drive. If the correct drive is not the one displayed in the "CDROM drive" data field, use the arrow beside the data field to display the drives and change the selection. Once you have the correct drive selected, click on

"OK" and you will be presented with the first of two windows where you will record information about the railroad. Figure 1-4 shows this window.

Figure 1-4

6. Only the first three items in this window are going to be changed:
  - a. Railroad Initials            PRO
  - b. Railroad Name                ProTrak Demonstrator
  - c. Folder/directory            PRO
 To make the changes, highlight the existing data and type the new data over it.
  
7. Figure 1-5 below shows what the window should look like after you've made your changes.

**New Home Railroad**

**Instructions**

- 1) Enter data in each datafield shown below. Hit 'OK'.
- 2) Please wait while data is copied from current railroad to 'NEW' railroad.
- 3) Exit here and then use usual templates to edit all data as required.

Railroad Initials: PRO

Railroad name: ProTrak Demonstrator

Folder/directory: PRO < Maximum 10 characters !

Region: NE: northeast

Operating year: 1988

Cancel OK

*Figure 1-5*

8. Go in and have a look at both Region and Operating Year, but for now we'll leave them unchanged. We'll discuss Operating Year later.

9. At this point in time, ProTrak treats the Region selection as a purely cosmetic feature. If you wish you can change the Region however it will not have any impact on the way ProTrak operates <sup>(2)</sup>.
10. Once the changes have been made, click on "OK". At this point you will see that some action is taking place and a progress bar will be displayed at the bottom of the window. This is ProTrak copying files that will be used by your new railroad. Once all the files have been copied you will move on to the second window (see Figure 1-6) where you will select the Railroad you just created.

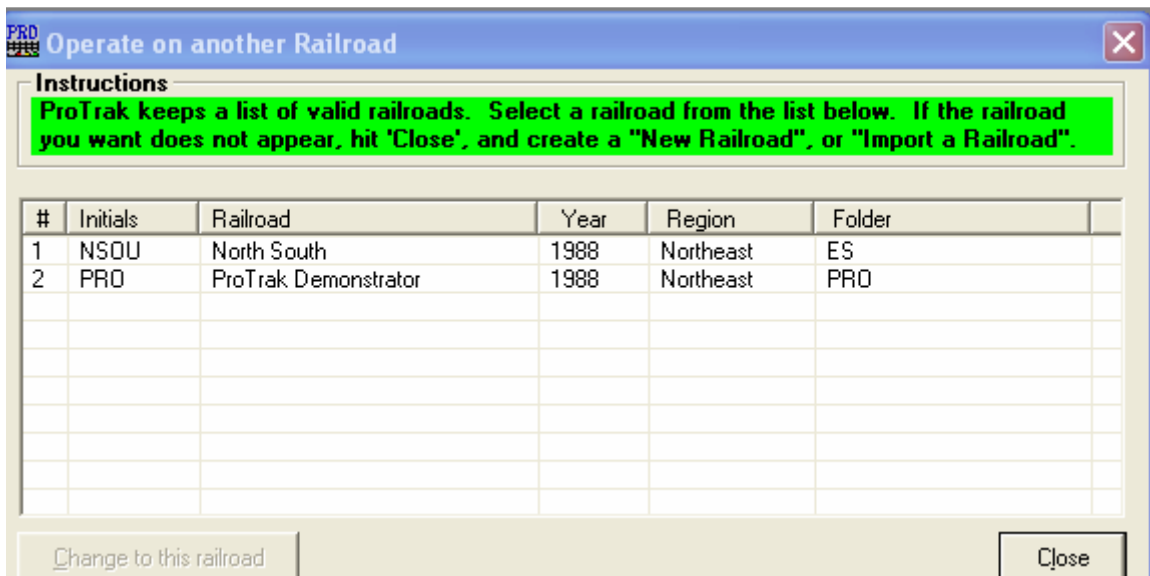


Figure 1-6

11. You will notice that there are only two railroads listed here, NSOU and PRO. NSOU is the sample railroad that is provided with ProTrak. If you previously have started to create a railroad, that railroad may also be displayed. In any case, the railroad we want to work with is PRO so click on that railroad (line 2 in this case), then click on "Change to this railroad". The message displayed in Figure 1-7 will now appear confirming that we are now working with the ProTrak Demonstrator Railroad.

<sup>2</sup> Here's a condensed version of Jim's comments on the "Region" data field: The "region of North America" setting is used to give a "relative perspective" of where the home road is. The map of connections for routing an empty foreign-road car looks different if you are in the southwest, rather than the northeast. These two would essentially be "backwards from each other. Similarly, from California, all empty cars would be routed "eastwards".

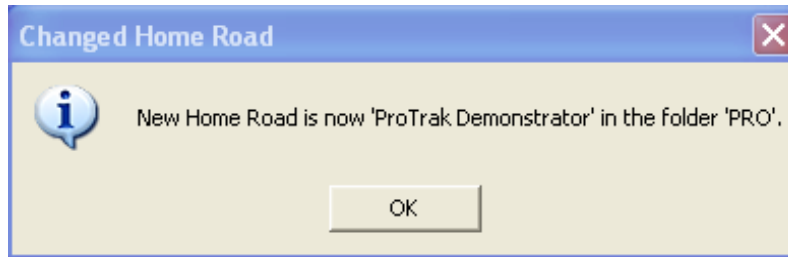


Figure 1-7

12. Click on "OK" to continue; the message window will close.

There are a few more general items that need to be taken care of before we start to enter the information about stations, cars, etc.

1. On the ProTrak toolbar, click on "Administration" then select "Core Segment Notes" (note that this may also show as "Middle Notes") from the dropdown list. The window shown in Figure 1-8 allows you set up some more of the 'tombstone' data for the railroad.

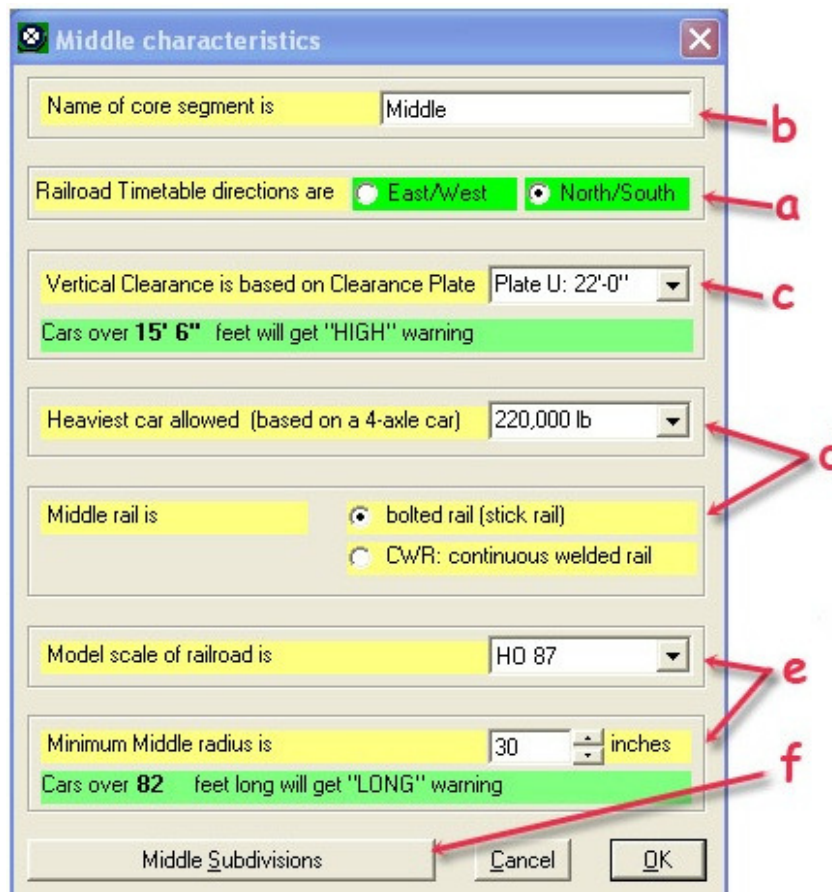


Figure 1-8

- a) If the "Railroad Timetable directions" (the second item in the window) isn't already set to East/West we need to change it. Click on the "East/West" radio button in the "Railroad Timetable directions" section to change it from "North/South".
- b) While we're not changing it, the "Name of core segment" could be changed to reflect the name that you use for your main subdivision.
- c) The "Vertical Clearance is based on Clearance Plate..."<sup>(3)</sup> selection will be important on your own railroad. On your railroad you will need to find the location which has the smallest vertical clearance between the top of the rail and the bottom of anything which crosses the track. Things that cross the rails may be a bridge or it may be another piece of material, such as a sub-roadbed which crosses overhead. Once you have this measurement (in scale feet) you need to choose the plate which will accommodate that measurement. Initially, we'll leave this set to "U" (the largest clearance) to keep things simple. Note that if you change the "plate" setting, the height value displayed in the green background area below may change accordingly<sup>(4)</sup>.

This is a good place to discuss tool tips. If you 'hover' your mouse pointer over the "Vertical Clearance" data field you will see a box with a line of text which reads "Sets Clearance Plate for Railroad #1". These tool tips occur quite frequently in ProTrak either to help us understand what data to put into a specific data field, or to give us a better understanding of the purpose of that data field. When a tool tip is known to be available, it will be indicated by "(tt)" in the text where the value for the data field is being discussed.

- d) Similarly, you can change the weight for the "Heaviest car allowed..." (tt), and the type of rail (the "Middle rail is" (tt) section). Keep in mind that both of these should be viewed in relation to the operating year. If you're modeling in the 1940's for instance, welded rail was not in use, so it is really not appropriate to choose that option.

---

<sup>3</sup> See "Clearance Plate" in the definitions in Appendix A.

<sup>4</sup> Currently, only Plate B has a height of 15'1"; all other Plates have a height of 15'6" thus you may not see a change to the height if you change the Clearance Plate value.

- e) The "Model scale of railroad is" (tt) can be changed to reflect what your railroad actually is and the "Minimum Middle radius is" (tt) can also be changed to reflect what the sharpest curve on the core segment of your railroad is. This means that while the mainline may have 30" radius curves as a minimum, the branch line or the sidings may have curves that are much sharper. As with the Clearance Plate settings, changing the minimum radius will affect the value displayed in the green background area below.
- f) Since we currently have no other subdivisions, we need not go into the "Middle Subdivisions" section, but let's have a quick look in there. Once you click on the "Middle Subdivisions" (tt) you will be asked about saving the Middle Subdivision Notes (see Figure 1-9). Note that you will be asked this question if any of the data has been changed, regardless of whether you went into the "Middle Subdivisions" section. Clicking on the "Middle Subdivisions" button also closes the "Middle characteristics" window.

A note about the terms 'Core Segment' and 'Middle Subdivision' If there is a subdivision name entered for the core segment, the name of the segment is used, otherwise the term 'core segment is used'. Since the sample railroad comes with a subdivision name for the core segment (Middle), the term 'Middle Subdivision' will be used.

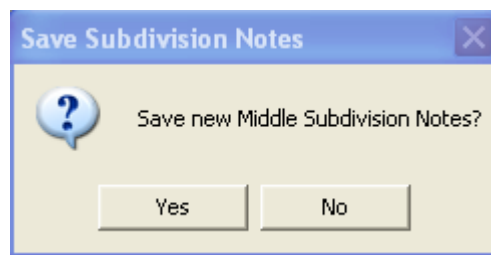


Figure 1-9

- g) Click on "Yes" and if you choose to view the subdivisions on Middle, the window displayed in Figure 1-10 will appear.

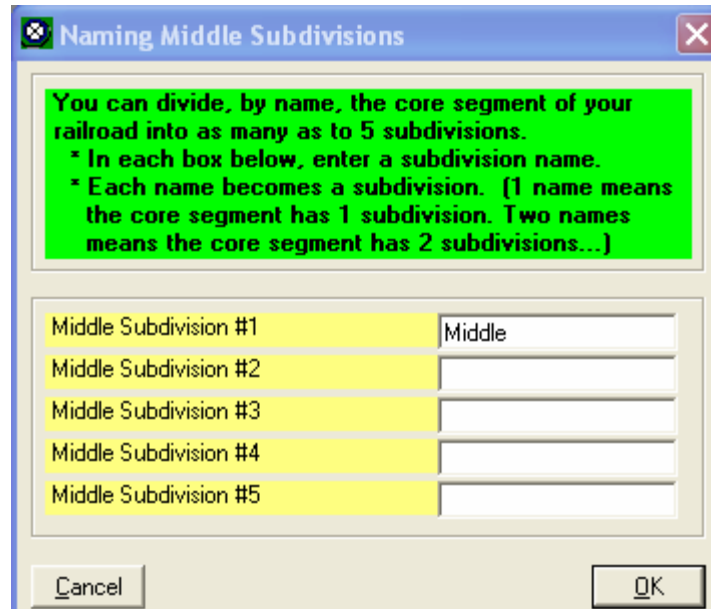


Figure 1-10

- h) Exit from here (click either on "OK" or "Cancel"), and for now, you've now completed all of the 'tombstone' data changes. Later we'll have to do some more.

A word of warning. Once you have the initial setup completed, if you exit the program and come back in at a later time, you may be faced with a window warning that you have engines that need servicing. You may either click on "Close" or, preferably, click on "Reset Hours". If you choose to click on "Close", you will receive the warning window every time you exit the program and restart it so it is recommended that you click on "Reset Hours".

## Program Options Settings

Within ProTrak, there are a number of settings which can be changed to suit the user. Some of these change the names displayed on the ProTrak toolbars, the individual items within a dropdown list and/or the headings on printed documents. We'll look at a few of these, but within this manual, we will **always** use the default settings i.e. the settings that were there when ProTrak was loaded. If in doubt as to what the default setting is, refer to Appendix H.

The first group of items we'll look at is shown in the "Definitions and Terminology" window.

1. On the ProTrak toolbar, click on "Administration", then choose "Definitions and Terminology" from the dropdown list. A window like the one shown in Figure 1-11 will appear.

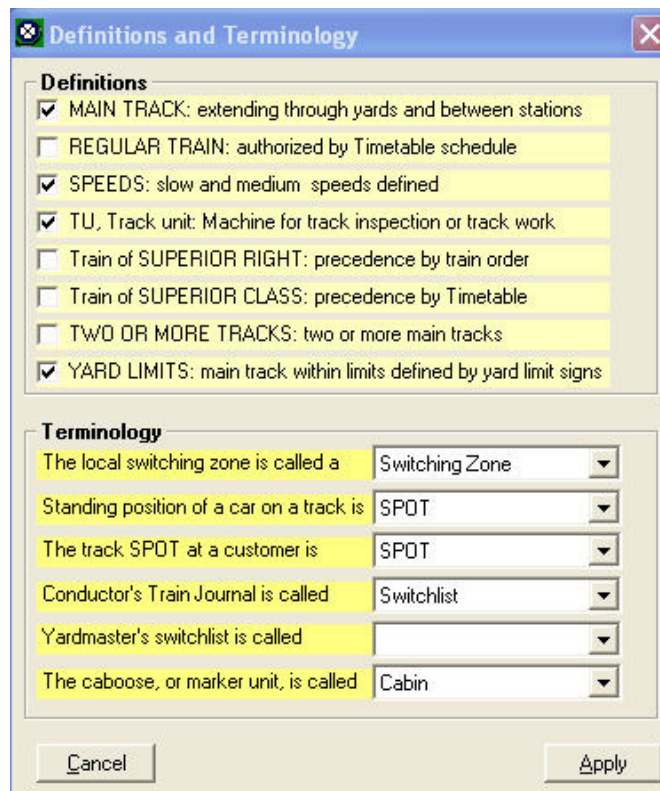


Figure 1-11

2. The upper part of the window contains a panel labeled "Definitions". For now we will ignore that area.

3. The lower part of the window contained the panel labeled "Terminology" and we need to look at that area.
  - a. The first item, "The local switching zone..." shows "Switching Zone" in the associated data field. If you click on the dropdown arrow beside the data field, you will see you have five options. The ProTrak default is "Switching Zone"
  - b. The second item, "Standing position..." shows "SPOT" in the associated data field. Again clicking on the arrow beside the data field shows that you have four options. The ProTrak default is "SPOT".
  - c. The third item, "The track SPOT..." also shows "SPOT" in the associated data field. You have five options with "SPOT" being the ProTrak default.
  - d. The fourth item, "Conductor's Train Journal..." shows "Switchlist" in the associated data field. You have eight options here with "Switchlist" being the ProTrak default. Changing this setting will alter the toolbar that is displayed when an operating session is run. The fourth item displayed on the toolbar while in operations mode will be "Switchlist" and that is the term that will be used in this manual.
  - e. The fifth item, "Yardmaster's switchlist..." shows a blank in the associated data field. You have two options with "Workorder" being the correct ProTrak default <sup>(5)</sup>.
  - f. The sixth item, "The caboose..." shows "Cabin" in the associated data field. You have eight choices with "Cabin" being the ProTrak default. This item is printed on the form which the conductor uses to manage his/her train. In our case this is called the "Switchlist" (see sub-para 'd' above).

If any of the items shown in your window do not match those shown in Figure 1-11, change the item to bring it into line with what we will be using.

If any changes have been made the "Apply" button needs to be pressed to force the changes to take effect. The "Cancel" button, when pressed, simply exits the window without making any changes.

As we work through the balance of the manual remember that if you come across a menu selection or a header on a printed document that does not match the one shown in this manual, a program default may have been altered. In that case please review Appendix H for possible causes and what the default setting is.

---

<sup>5</sup> Jim has noted that while "Workorder" is the correct default value, he has noticed when helping users with their data, the "Yardmaster's switchlist" data field frequently comes up blank.

## Summary

In Chapter 1 you have done the following:

- Created a new railroad, and
- Changed to the railroad you just created thus making it your home railroad.

You have learned about the following:

- The railroad "region";
- What clearance plates are and how they affect the railroad;
- What tool tips are and how to use them ; and
- What the default program options settings are and how to change them

You should see:

- Using the windows explorer, you should see a directory named PRO in the ProTrak directory; and
- Using the ProTrak toolbar, click on "File" then "Change home railroad". In this listing you should see the new railroad – ProTrak Demonstrator – listed.

We've now set up some of the "tombstone" data for the new railroad and can move on to Chapter 2 where we'll enter the data for the stations on our railroad.